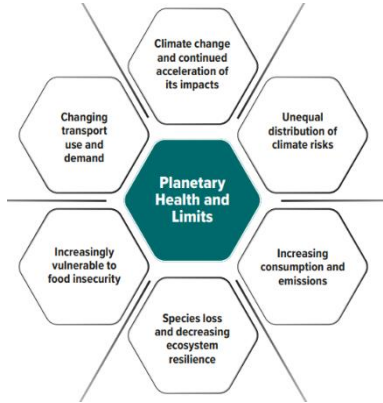
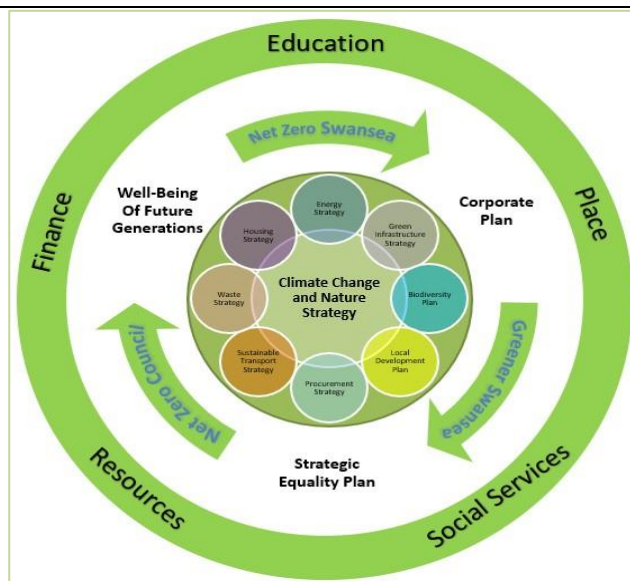


Appendix A: Delivering on Nature Recovery and Climate Change

Objective Detail	Evidence
<p>Why this priority is a well-being objective.</p> <ul style="list-style-type: none"> • Following Welsh Government declarations for Wales, the Council has declared both a Climate Emergency in June 2019 and a Nature Emergency in November 2021. • Using the Welsh Government Route map to net zero, Swansea Council will align with its principles, knowing what needs to be done now, by 2022-26 Low Carbon becoming the norm and by 2030 where choosing carbon zero is routine. • Sound governance has been established within the council to act on such challenges and all activity will be driven within the parameters of the Well-being of Future Generations Act (Wales) 2015, the Environment Act (Wales) 2016, the Strategic Equality Plan and the Corporate Plan and the Swansea (PSB) Well Being Plan. 	<p>Future Trends Report - This objective aligns and will be pivotal to reacting effectively to the identified trend – Planetary Health and Limits.</p> <div style="text-align: center;">  </div> <p>Recovery Plan – October 15th 2020 – Cabinet report. The Leader of the Council submitted a report which provided an overview of the initial remobilisation of the Council and the immediate priorities from the COVID-19 crisis, the longer term plan from recovery to transformation and the framework to replace Sustainable Swansea Strategy with Swansea – Achieving Better Together. Climate change and nature recovery are seen as critical to economic and environmental recovery as per: <u>Report - Corporate Template (swansea.gov.uk)</u></p>



- To ensure that in addition to achieving net zero 2030 for Swansea Council, we will work with partners, organisations, schools, businesses to support Swansea as a whole county and citizens in its efforts to become net zero by 2050, aligning with the Net Zero Wales Carbon Budget (2) 2022-2025. Establishing both Climate and Nature Charters and a Pledge Wall to encourage active participation and help build a healthier, more prosperous and biodiverse/ ecologically resilient Swansea.
- Swansea is one of the most ecologically rich and diverse counties in the UK. Its unique variety of habitats and species and wonderful range of parks, greenspaces, nature reserves, beaches and landscapes needs to be maintained, enhanced and sustainably managed for the benefit of everyone now and into the future.

Future Generations Commissioners Report 2020

– Swansea Council will strive to focus in the following areas and should:

- Demonstrate global citizenship and leadership by supporting sustainable behaviour and making the connections.
- Play our part to ensure Wales is welcoming, safe and fair to all.
- Commit to fair and ethical investment and divestment - making the right financial decisions now to enable future generations to thrive.
- Ensure supply chains are fair, ethical and sustainable.
- Ensure that Swansea understands the importance of using the earth's resources efficiently in order to contribute to global well-being.

Swansea Council Climate Change & Nature Recovery – Progress Update November 2021.

We have undertaken an **Integrated Impact Assessment** screening to align with the most recent strategy:

[Agenda for Cabinet on Thursday, 18 November 2021, 10.00 am - Swansea](#) (Item 69)

Appendix 1 – Survey analysis

Appendix 2 – Strategy

Appendix 3 - IIA

Our natural environment and biodiversity is under threat and in decline due to unsustainable human activities. Habitats and species are being lost at an alarming and unsustainable rate. We need to raise awareness of the impacts of biodiversity loss and climate change at the local level and provide information, advice, and practical support and incentives to encourage others to take action and collaborate to deliver positive solutions to these challenges

- We want everyone to have access to, understand, appreciate and benefit from Swansea’s outstanding natural environment and to play their part in looking after and enhancing it, resulting in a healthier, greener and more prosperous Swansea.
- Our future survival and quality of life is dependent on healthy resilient natural environment, the multiple benefits it provides to society and on reducing our carbon emissions to net zero
- We have a moral responsibility to look after biodiversity for its own intrinsic value

- The wellbeing objective aligns with our policy commitments, in particular:

A GREENER MORE RESILIENT SWANSEA

Standing Up for a Greener Swansea
 Delivering Green Energy
 Lighting Our Communities
 Delivering Better & Smarter Transport
 Greener, More Sustainable Transport
 A Bike and Cyclist Friendly Swansea
 Fairer Parking
 Valuing Our Parks, Open Spaces and Natural Environment
 Growing Local

Swansea council is currently working towards Bronze One Planet Standard accreditation. [The One Planet Standard – Transform your organisation into a successful changemaker](#)

The longer-term challenges this well-being objective will help address.

- A public sector target of 2030, ahead of the Welsh Government's target of 2050 for the whole of Wales, will give us our best chance of keeping global warming below 1.5°C. This is the tipping point at which the climate impacts we're already experiencing will go from bad to potentially catastrophic. We'll see natural systems cross danger points, triggering lasting changes such as extreme

Swansea Council

Internally there is clear understanding of meeting the long term challenges.

Decarbonisation - In October 2021 Swansea Council submitted its first emissions report to Welsh Government, evidence was collated for 2019-20 and 2020-21, work will continue through National and Regional groups to set ambitious targets in order to deliver net zero carbon for the Council by 2030 and for Swansea by 2050.

The Council prepared and submitted to Welsh Government in Dec 2019 a report (Section 6 Monitoring Report) outlining what it has done to comply with the Section 6 Biodiversity Duty.

storms, heatwaves, mass loss of natural habitats and species.

- We are at a critical point in time for nature recovery and without urgent transformative change, many of our species and habitats will continue to decline or become extinct.
-
- Halting and reversing the loss of biodiversity through reducing harm and unsustainable use and moving to a situation where we are working with nature to maintain healthy resilient ecosystems that will continue to provide long-term quality of life (or ecosystem services) benefits upon which we all depend.
Add targets for Nature recovery in here yes please
- Tackling climate change, which is one of the greatest challenges facing us all and we need to reduce our carbon footprint and to mitigate for and adapt to the likely risks and impacts.
- Creating high quality environmentally and low carbon responsible and sustainable green jobs that make the most of our unique natural resources e.g. through environmental tourism, sustainable land and coastal management, local food production ,sustainable waste management ,energy efficiency , renewable energy and carbon capture. As such we will explore and support projects such as on and off shore renewables which align to these ambitions
- Reducing inequalities in health and well-being by maintaining and enhancing a high quality and accessible natural environment plus ensuring fair

<https://democracy.swansea.gov.uk/documents/s62825/11%20-%20Section%206%20Biodiversity%20Monitoring%20Report%20Dec%202019.pdf>

Swansea

Collaborative working to influence Swansea wide behaviour change can be demonstrated through the introduction of a climate pledge, the sign up of large businesses across Swansea to our climate charter, , ongoing work with PSB and collaborative working with an environmental partner, schools, community groups and businesses.

Risks are monitored through the corporate risk register and Swansea has declared a Climate Emergency in June 2019, A Nature Emergency in November 2021 and an Energy Crisis Notice of Motion in January 2022.

The Climate Change and Nature Strategy reflects the detail of this two pronged approach.

[07 1 of 4 - Climate Change.pdf \(swansea.gov.uk\)](#)

access to low carbon energy, homes, travel options, sustainably sourced food and greener job opportunities

Sustainably managing and enhancing the quality of our natural resources including air, water, soils and biodiversity will help increase Swansea's ecological resilience and the well-being of its inhabitants.

The steps we will take to meet this well-being objective.

- Develop, adopt and implement a Corporate Biodiversity (Section 6) Action Plan in line with Welsh Government's 3 year reporting cycle alongside the preparation and delivery of a Nature Recovery Action Plan in collaboration with The Swansea Nature Partnership and the preparation of a County wide Green Infrastructure Strategy .
- Embed a Climate Change and Nature Strategy and Action Plans, working with and encouraging partners, organisations, businesses, communities and individuals to support nature recovery and reduce their carbon footprint, signing up to the Climate and Nature Charter /Pledge.
- Deliver the energy action plan, working towards creating a low carbon economy, which promotes renewable energy and takes actions to reduce the carbon footprint for Swansea Council and Swansea in line with Welsh government reporting guidelines.

Policy Development

Meeting this objective can be demonstrated through the approval of a variety of new policies/strategies, for example:

Biodiversity and Development Supplementary Planning Guidance (SPG):
<https://www.swansea.gov.uk/biodiversityspg>

Trees, Hedgerows and Woodlands SPG:
<https://www.swansea.gov.uk/treespg>

Energy Strategy:
[Issue details - Energy Strategy 2020-2030. - City and County of Swansea](#)

Green Infrastructure Strategy:
[Agenda for Economy, Environment & Infrastructure Policy Development Committee on Thursday, 17 December 2020, 2.00 pm - City and County of Swansea](#)

ULEV Strategy:
[Agenda for Economy, Environment & Infrastructure Policy Development Committee on Thursday, 18 November 2021, 2.00 pm - City and County of Swansea](#)

Active Travel:
[Report - Corporate Template \(swansea.gov.uk\)](#)

- Review the Councils' Procurement approach to embed its social value within its ward criteria maximising the local spend within the locality and region and reducing the carbon footprint of its commissioned activities

Embed and deliver a sustainable transport strategy and encompassed action plans on active travel, green fleet, grey fleet and street lighting

- Continue to develop the Councils Energy efficient new builds More Council Homes programme to net zero standards and subject to funding begin to roll out the decarbonisation of its existing housing stock in line with emerging WG Guidance.
- We will commence and ensure that the design and development of all new 21st Century schools to be Net Zero Carbon targets from January 2022. This will include new builds and major refurbishments.
- We will seek to maximise opportunities to lower carbon input into maintenance and renovation work in existing public buildings and work towards utilising net zero materials by 2030
- Deliver a waste reduction strategyincluding minimise our use of non-recyclable products and materials, recycle more waste and promote a circular economy.
- Take action to maintain and improve the quality of our air, water and soils.

More Homes and Housing Decarbonisation:
[Report - Corporate Template \(swansea.gov.uk\)](https://www.swansea.gov.uk)

[Agenda for Council on Thursday, 27 January 2022, 5.00 pm - Swansea](#) (Item 100)

How we will maximise our contribution to the national goals through the way in which we work.

- *Preventing problems from occurring or from getting worse* – By halting the decline of biodiversity and maintaining and enhancing a resilient natural environment, we will maintain vital ecosystem services (e.g. flood alleviation, air and water quality, carbon storage and pollination) and help to maintain people’s health, well-being and quality of life. By helping people to understand the causes of problems and how by working together, we can prevent problems occurring. By delivering net zero targets we can help avoid global warming and subsequent consequences. Adaptation activity will help us prepare for change already identified as unavoidable.
- *Addressing long-term challenges* – We want to reverse the loss of biodiversity, promote healthy resilient ecosystems, and strengthen green infrastructure to adapt to and mitigate for the impacts of climate change, and ensure that our natural environment and the benefits and services it provides are protected for the benefit of future generations. We want to achieve net zero carbon.
- *Working in partnership with others* – We will continue to support and collaborate with others to co-ordinate the planning and delivery of actions and maximise use of resources.
- *Avoiding conflicts between public body objectives* – By raising awareness of biodiversity and climate change and ensuring that it is taken into account at the early decision-making /design stages of plans

Future Generations Commissioners Report 2020
[Future Generations \(futuregenerations2020.wales\)](https://futuregenerations2020.wales)

Examples provided in main text.

<p>and projects, the potential for conflict will be reduced.</p> <ul style="list-style-type: none"> • <i>Involving people</i> – We will build capacity and achieve more by involving and supporting the local community to participate in identifying and delivering initiatives that maintain and enhance the natural environment and reduce our carbon footprint . More people will be enabled to access and enjoy their natural environment and contribute to mitigating the impacts of climate change,. 	
<p>How we will measure progress ¹.</p> <ul style="list-style-type: none"> • We will monitor the delivery of the Section 6 Corporate Biodiversity Plan the Nature Recovery Action Plan and the Resilient Wales goal through annual business planning and reporting mechanisms up to 2027. We will report to WG every 3years in line with our Biodiversity Duty • We will embed a Climate Change and Nature Strategy and monitor the delivery of respective Action Plans up to 2027 • We will continue to monitor air and water quality. • We will monitor the delivery the energy action plan targets proposed to 2027 • We will set out new measures for monitoring the impact of our Procurement of goods and services in line with eth emerging WG carbon measurement toolkit. 	<p>Next (3 yearly) Section 6 Biodiversity Duty monitoring report due to be submitted Dec 2022</p> <p>Report - Corporate Template (swansea.gov.uk) Tree Management Strategy</p> <p>07 1 of 4 - Climate Change.pdf (swansea.gov.uk)</p> <p>Currently monitoring emissions in line with WG reporting guidelines, 2019-20 and 20-21 submitted, but not published. New delivery plan for 2030 NZC to be developed over the summer of 2022.</p> <p>Issue details - Energy Strategy 2020-2030. - City and County of Swansea Report - Corporate Template (swansea.gov.uk) Regional Energy Strategy</p> <p>New Social responsibility and Sustainability in procurement Policy currently in draft.</p>

¹ Provisional pending data development. Reporting likely to commence in 2019/20

<ul style="list-style-type: none"> • We will embed and deliver a sustainable transport strategy to 2027 • We will continue to report the number of new homes constructed to net carbon zero standards and set out new measures of recording the decarbonisation of our existing stock in line with emerging WG guidance • We will report on the delivery of deliver a waste reduction strategy 	<p>New Sustainable Transport Strategy in draft (July 2022)</p> <p>Report - Corporate Template (swansea.gov.uk)</p> <p>Report - Corporate Template (swansea.gov.uk)</p>
---	--

The contribution this well-being objective makes to the national goals.

A prosperous Wales	A Resilient Wales	A more equal Wales	A Wales of more cohesive communities	A Wales of vibrant culture and thriving Welsh language	A healthier Wales	A globally responsible Wales
<input checked="" type="checkbox"/>	<input checked="" type="checkbox"/>		<input checked="" type="checkbox"/>	<input checked="" type="checkbox"/>	<input checked="" type="checkbox"/>	<input checked="" type="checkbox"/>

The contribution this well-being objective makes to the Public Service Board objectives.

Children have a the best start in life to be the best they can be	People live well and age well	Working with Nature	Strong communities
<input checked="" type="checkbox"/>	<input checked="" type="checkbox"/>	<input checked="" type="checkbox"/>	<input checked="" type="checkbox"/>